



by **ppg**



# ARMAWALL 3 COAT SYSTEM

**Armawall** Texture Coating systems are suitable for a wide range of substrates used in the construction industry, from fibre cement sheeting to Dincel Building System, from cement render to EPS (polystyrene) and all masonry substrates including AAC. We work with leading substrate manufacturers to develop products to meet the needs of an ever changing market.

**Armawall** has a proud history in texture coatings and continues to strive for excellence in this challenging market.



## 1 SURFACE PREPARATION

Prepare the substrate for application through filling cracks, sealing, or smoothing the surface. This promotes easier application, and a better and longer lasting finish.

## 2 TEXTURE COAT

Provides the base texture, which provides the aesthetic look and desired profile. Armawall has a wide range of textured finishes and the profiles range from subtle roll on texture finishes to heavier trowel applied finishes.

## 3 TOP COAT

Designed and engineered to offer excellent dirt shedding properties and greater flexibility, which will ensure greater long-term surface and substrate protection from the elements.

**Armawall texture coatings work as a system. The application of a primer and texture coating creates the profile and the top coat will enhance the durability, long term protection and dirt shedding properties of your selected system.**

Armawall Texture Coatings are designed to perform at their optimum, when they are used as a complete coating system. With this in mind we strongly recommend that the coating system that you have selected be applied by an Armawall trained applicator, experienced in the application of the products and with knowledge of our systems.

## MOROKA BAG & PAINT



### MOROKA BAG & PAINT

Taubmans Moroka is a technologically advanced coating system for bricks, blocks and masonry walls, it is a faster and more economical way to achieve a bagged and painted appearance. Recommended for use on flush mortar brick walls, and is also suitable for concrete and cement render.

### TWO COAT SYSTEM

#### 1. Moroka Wall Treatment

A water based silane modified acrylic treatment specially designed to maximise resistance to efflorescence over bare masonry surfaces. Highly resistant to attack by alkali, it forms a sound base for adhesion of Moroka Bag & Paint finish coat.

#### 2. Moroka Bag & Paint

A durable exterior acrylic designed to give a medium profile "bag and paint" effect. Moroka Bag and Paint also bridges hairline cracks in masonry surfaces. This finish may be applied using a lambswool mitt to create special decorative bag and paint effects, or simply rolled on.



For increased **durability** and **long term protection** an optional coat of an Armawall Top Coat can be applied.



# SURFACE PREPARATION PRODUCTS

## ARMAWALL PRIMER (WATER BASED)

- A water-based acrylic primer/sealer.
- Specially modified to maximise penetration and adhesion.
- Alkali resistance.
- Designed and formulated to even out the porosity of the substrate prior to application of the Armawall Texture Systems.
- Strong adhesion of topcoats to the substrate.
- Seals the surface for a more easily controlled application.
- Suitable for use on new and previously painted surfaces offering maximum adhesion.

## ARMAWALL SEALER BONDER (SOLVENT BASED)

- A premium solvent-based acrylic blend which penetrates into the masonry surfaces.
- Promotes the adhesion of water-based topcoats.
- Suitable for application to masonry, unpainted interior or exterior brickwork.
- Specifically recommended for Tilt Slab Concrete and Compressed Fibrous Cement (CFC) where water-based sealers are not effective.

## ARMAWALL ARMAPATCH SMOOTH

- A premium water-based acrylic cement patching compound.
- Fills and skims compound suitable for masonry substrates.
- A sandable filler developed to deliver a very smooth surface of small defects and fine cracks up to 3mm in depth.
- Easier to apply and longer open time.
- For exterior use add 3kg of grey cement to 15L of ArmaPatch prior to use.
- With a VOC level of 2g/L, ArmaPatch Smooth is perfect for interior use and it does not require the addition of cement.

## ARMAWALL COARSE PATCH

- A premium acrylic-based filling and patching compound.
- Filling joints in fibre cement, and patching of defects, depressions, and cracks up to 8mm.
- Add 20% by volume of grey cement powder prior to use for exterior use.
- For exterior and interior use.
- Suitable for application over previously painted surfaces.

## ARMAWALL RENDER BOND

- Increases the impact of the mixture of Armawall Render Coat and Armawall Skimcote renders.
- 100% acrylic bonding agent for the addition of cement renders and concrete mixers.

## ARMAWALL RENDER COAT

- A pre-blended cement render that contains polypropylene fibres to add strength and bond characteristics not achievable with site-mixed renders.
- Resists cracking, crazing and drummy render issues, associated with conventional sand and cement renders.
- Suitable for interior and exterior rendering and can be used on all masonry substrates including AAC, brick and blockwork, Off Form Concrete and Tilt Up panels.
- Easy to apply rendering product for thickness' between 4mm to 12mm.
- Requires the addition of clean water and Armawall Render Bond.
- Suitable for pump and spray on applications.

## ARMAWALL RENDER COAT PLUS

- A pre-blended polymer modified cement render.
- Resists cracking, crazing, and drummy render issues, associated with conventional sand and cement renders.
- Suitable for use on both interior and exterior substrates including AAC, brick and blockwork, concrete and EPS (polystyrene) substrates.
- Easy to apply rendering product for thickness' up to 12mm thick.
- Does NOT require the addition of Armawall Render Bond prior to application by conventional rendering methods.

## ARMAWALL RENDER COAT FHR

- An enhanced pre-blended acrylic modified cement based render.
- Contains polypropylene fibres to add strength and bond characteristics not achievable with site-mixed renders.
- Resists cracking, crazing, drumminess and other render issues associated with conventional sand & cement renders.
- Suitable for both exterior & interior rendering applications.
- Particularly suited for application onto AAC panel and blocks, conventional brick and block work.
- Suitable for pump/ spray on and conventional hawk & trowel rendering applications.

## ARMAWALL SKIMCOTE

- A pre-mixed polymer modified powder, thin section cement render.
- Single pack requiring the addition of clean water and Armawall Render Bond, mixing on site immediately before application.
- Easy to apply coating, between 2mm to 6mm film thickness.
- Interior and exterior use over most common masonry building substrates including AAC panel and block, brick and blockwork, Off-Form Concrete, and Tilt Slab construction.
- Provides an even surface for finishing applications.

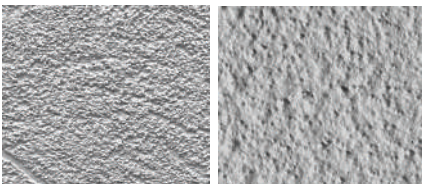
## ARMAWALL POLYMER RENDER

- A pre-mixed single component, thin section, and flexible render.
- Can be used as a stand-alone texture.
- Ideal for difficult substrates, including fibre cement sheeting, previously painted surfaces, dense smooth concrete, AAC Hebel blocks and panels and polystyrene, as well as standard masonry substrates.

## ARMAWALL ROLL ON RENDER

- A pre-mixed, thin section acrylic render or patching compound.
- Recommended for creating a smooth render effect on cement block, AAC Hebel, cement render, fibre cement, masonry substrates, and previously painted surfaces.
- Can be applied up to 3mm in a single application.
- Suitable for topcoating with low profile texture finishes.
- May be applied by texture roller and trowel or by hawk and trowel.

## ARMAWALL VILLA SANDS



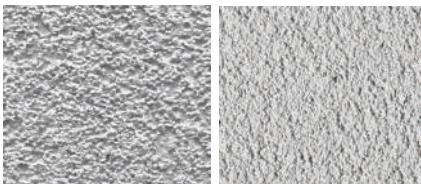
- A durable, acrylic texture coating finish, with a medium grade granular texture.
- Apply with a trowel and finished with a plastic float.
- Can be sprayed through a hopper gun or texture spray unit, giving a stucco style finish.
- Topcoat with Armawall Armashield, Armawall Roll On Membrane or Armawall Satin for enhanced durability and substrate protection.

## ARMAWALL VERONA



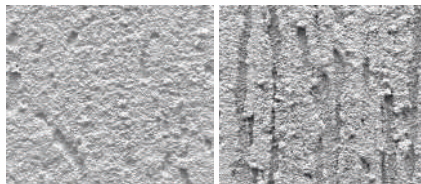
- A tough acrylic pigmented texture coating that contains fine aggregates.
- Gives a subtle, fine sandstone-like finish.
- Topcoat with Armawall Armashield, Armawall Roll On Membrane or Armawall Satin for enhanced durability and substrate protection.

## ARMAWALL TUSCANY SAND



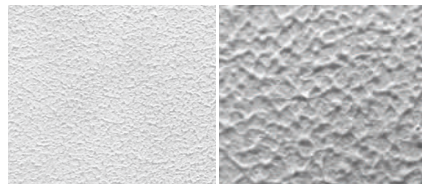
- A pre-mixed single component material designed to produce a flat, relatively smooth sandy texture.
- Leaves the appearance of natural stone.
- Topcoat with Armawall Armashield, Armawall Roll On Membrane or Armawall Satin for enhanced durability and substrate protection.
- Available in a fine or coarse finish.

## ARMAWALL TROWEL ON



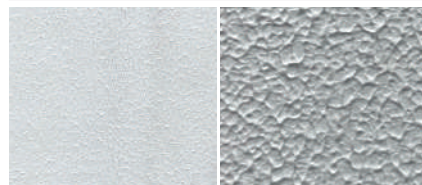
- Armawall 1.5mm and 2mm Trowel On finishes are durable and a high build with an acrylic texture finish.
- Applied by trowel and finished with a polystyrene float, gives a distinctive texture patterns of lines, swirls, or circles.
- Perfect for traditional style buildings and walls.
- Topcoat with Armawall Armashield, Armawall Roll On Membrane or Armawall Satin for enhanced durability and substrate protection.

## ARMAWALL ARMASHIELD



- A smooth acrylic membrane in a matt and low gloss.
- Tough and durable.
- Excellent dirt shedding properties.
- Easy flowing for fast application to a variety of substrates and texture coatings.

## ARMAWALL SATIN



- A tough acrylic membrane with a satin finish.
- Excellent long term durability.
- Excellent dirt shedding properties.
- Breathable.

## ARMAWALL ULTRAFINE FLAT



- A durable and versatile exterior matt acrylic finish giving a traditional cement render appearance.
- A very fine silica that can be applied in various pattern and styles.
- Can be left as a matt finish or can be overcoated with Armawall Armashield or Armawall Satin for extra durability and substrate protection.

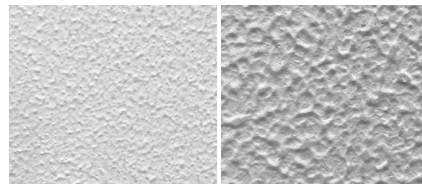
## ARMAWALL INTERIOR FLAT



- An acrylic texture coating.
- For application on interior or shaded exterior balcony soffits.
- Offers a medium stippled profile.

# ROLL ON FINISHES

## ARMAWALL IMPACT



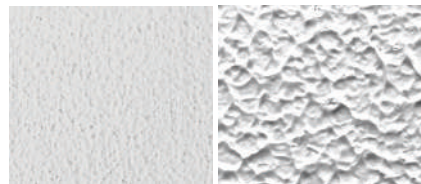
- A low gloss acrylic membrane coating containing fine silicas, giving a soft and grainy feel.
- Excellent long term durability.

## ARMAWALL ULTRAFINE



- A durable exterior matt acrylic finish.
- Traditional cement render appearance.
- A very fine silica which can be applied in various patterns and styles.
- Can be left as matt finish or overcoated with Armawall Armashield or Armawall Satin for extra durability and substrate protection.

## ROLL ON MEMBRANE



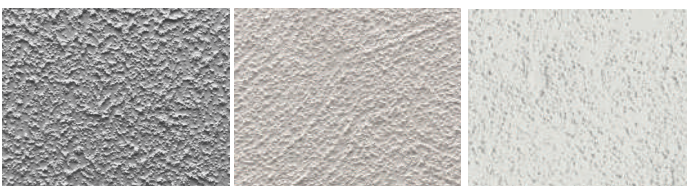
- A low gloss acrylic membrane.
- Durable and long lasting.
- Excellent dirt shedding properties
- Easy to apply.
- Suitable for a variety of substrates and texture coatings, particularly high rise and domestic repaints.

## ARMAWALL SAND



- Provides a premium exterior matt finish.
- A heavy duty, high build texture containing fine aggregates.
- A fine, grainy texture that can be applied in various patterns and styles for a modern fine cement rendered look.
- Can be left as a matt finish or overcoated with Armawall Armashield or Armawall Satin for extra durability and substrate protection.

## ARMAWALL ULTRASAND



- A durable, exterior matt finish which gives a cement rendered appearance.
- Contains a fine sand and can be applied in various patterns and styles.
- Can be left as a matt finish or can be overcoated with Armawall Armashield or Armawall Satin for extra durability and substrate protection.





# CASE STUDIES

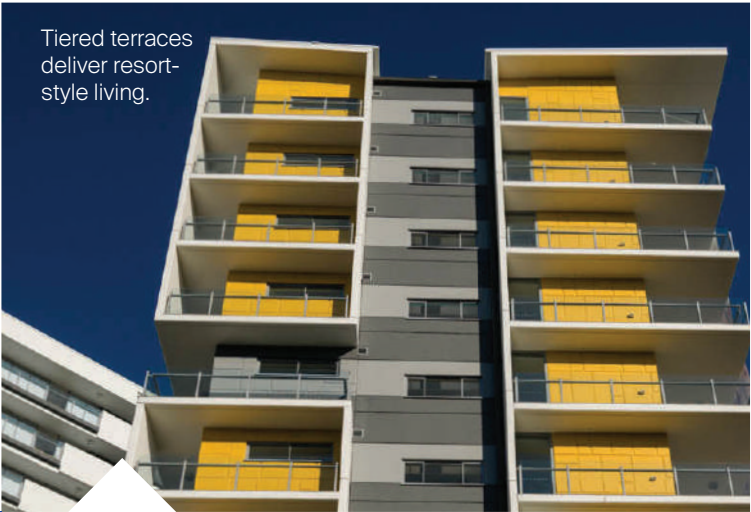
## Infinite Variation: The Sculptural Faces of Infinity Tower

Infinity is Brisbane's third tallest building, created by developer Meriton and designed by DBI Design. The building is an impressive 249 metres tall, and contains 549 dwellings with a mix of serviced apartments and private residences distributed over 81 levels.

PPG was able to satisfy both of the developer's objectives, proposing Armawall™ for the protective textured exterior coatings (all of those crisp, white concrete projections), offset against the sharp black glazing. Armawall Primer which was used on all substrates. Armashield was applied on the exterior walls, columns & slab edges. During the extensive painting process, PPG worked closely with the painter and the developer to ensure that all coatings and paint finishes were applied using the best techniques for the application. This ensured that quality standards were met, and the result speaks for itself.



Brisbane's third tallest building at 249m.



Tiered terraces deliver resort-style living.

## Reaching for the Sky in Kelvin Grove

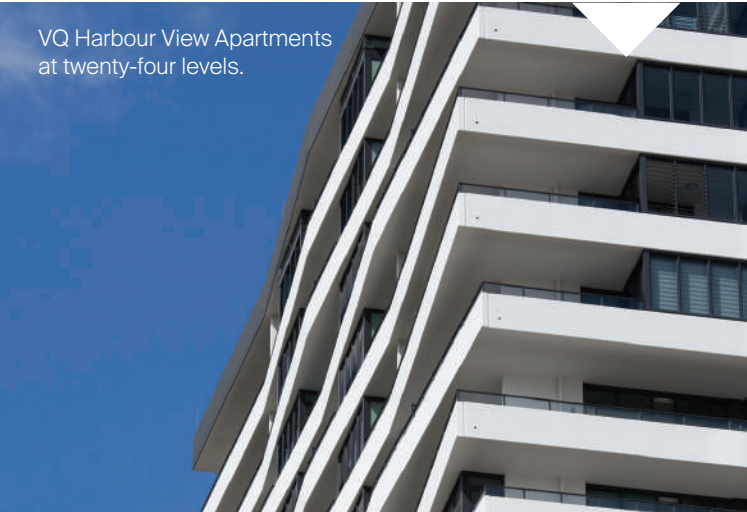
The SkyView apartment building is the third of three buildings comprising the Urban Edge development, created by developer and builder Pradella on an island site in Kelvin Grove, west of Brisbane's CBD.

Armawall Primer has been applied on all substrates. Armawall Ultrasand and Armashield has been applied on the walls, columns and slab edges. Armawall Satin on the soffits and Armawall Interior Flat on the internal ceilings. The environmental conditions experienced by the building in its subtropical location demanded a product with the right credentials, and one that was able to offer a usable life exceeding ten years. This was important as expressed in the body corporate's maintenance budget. Armawall™ meets all these requirements, and is capable of withstanding subtropical conditions, resisting fading, peeling, cracking, and mould development for many years.

## A view to a better quality of life in Rhodes

Reaching for the sky at twenty-four levels, the Village Quays (VQ) Harbour Views apartment building in Rhodes offers spectacular outlook from most levels.

With so much of the exterior of the building (all of the precast) requiring a paint finish, PPG proposed the Armawall™ system, delivering a superior result for the application. Armawall Sealer Bonder and Armashield was applied on the external walls and columns. Armawall Primer, Armawall Sand and Armashield was applied on the external balcony soffits. Armawall™ provides high resistance to fading, blistering, mould development and other forms of ageing for a significant period, benefiting residents through lower maintenance fees. The façade of VQ Harbour Views was painted in a simple palette of crisp white, light grey and dark grey; this neutral colour scheme was extended across all five buildings at Village Quays.



VQ Harbour View Apartments at twenty-four levels.



Resort style living at The Avenue.

## Capturing the spirit of resort style living

As an exercise in place-making and setting new standards for residential amenity, The Avenue stands tall in Darwin's housing market, both literally and figuratively.

The builder, Sunbuild chose Armawall™ for this application, and PPG was proactive in ensuring that all aspects of installation met with their high standards. This was essential as the right paint is of little help if the substrate or painting surface has not been prepared properly. Armawall Sealer Bonder was used on all substrates and Armawall Satin on all walls, columns and slab edges. With the technology built into the paint, and a range of textured finishes achieved, the external finish of the building was delivered with a warranty exceeding ten years, which is an achievement for tropical applications.